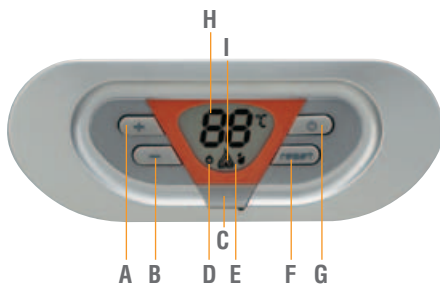


# SKY ECO F

## GAS WALL-MOUNTED WATER HEATER OF LOW NO<sub>x</sub> TYPE WITH FORCED DRAUGHT AND SEALED CHAMBER

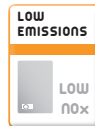


Gas water heater with sealed chamber, modulating heat power and electronic control of combustion with fumes emission of **LOW NO<sub>x</sub> type**.

- **Heat exchanger** with copper finned pipes, finished externally with an aluminium rustproof treatment
- **ECS (Evolved Combustion System): electronic control of combustion and continuous modulating heat flow**, managed continuously by a microprocessor that ensures maximum water heater efficiency according to the thermal load
- **Fumes output and air input** that are set via a coaxial pipe 60/100 mm with double 80 mm pipe (air/ fumes). Supply of full accessories for both solutions
- Ideal for installation both **indoors and outdoors**, in a partially protected place (standard minimum -5°C and down to -15°C with the optional antifreeze resistance kit)
- Simple and intuitive **key controls** to adjust the water temperature and **large display** for easy, prompt reading
- **Set up** to operate with solar panel systems
- Available to operate with **Methane gas, LPG and Propane Air** (50% air - 50% G31)
- Wide range of hot water **temperature regulation** and **power modulation**
- Compact **size**, contained weight and **highly functional internal** layout of the device in order to facilitate maintenance

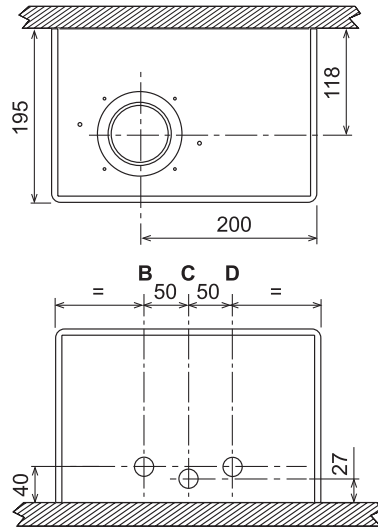
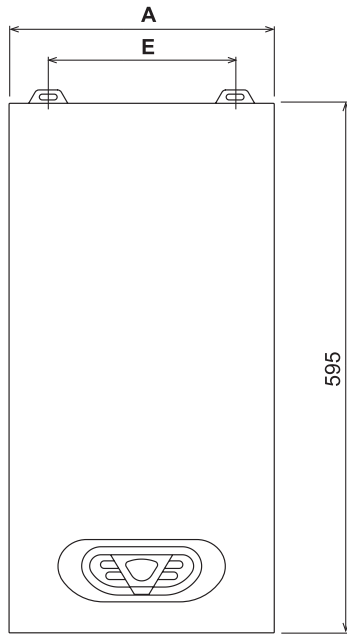
### > KEY

- A** Key to increase the domestic hot water temperature
- B** Key to decrease the domestic hot water temperature
- C** Service Tool connection
- D** OFF symbol
- E** Domestic operation symbol
- F** Reset key
- G** Device on/off key
- H** Multifunction symbol
- I** Burner on symbol and current power level (Flashing during faulty combustion)



MODEL			ECO 11 F	ECO 14 F	ECO 17 F
ERP Class	XL	(Class G - A)			
Nominal heat flow rate	Max	kW	21.7	26.9	32.9
Thermal power	Max / Min	kW	19.5 / 5.5	24.2 / 9.37	29.6 / 11.47
Maximum operating pressure		bar	10	10	10
Maximum domestic production	Δt 25°C / Δt 30°C	l/min	11.2 / 9.3	13.9 / 11.6	17.0 / 14.2
Domestic temperature regulation	Min / Max	°C	40 / 65	40 / 65	40 / 65
Weight when empty		Kg	14	15	18
Electric power supply		V/Hz	230 / 50	230 / 50	230 / 50
<b>CODE</b> (see page 5)	<b>NAT. GAS</b>		<b>ODF94IAA</b>	<b>ODF95IAA</b>	<b>ODF97IAA</b>
	<b>LPG</b>		<b>ODF94KAA</b>	<b>ODF95KAA</b>	<b>ODF97KAA</b>

## SKY ECO F



### > KEY

**B** Domestic outlet Ø 1/2"





**C** Gas inlet Ø 3/4"

**D** Domestic inlet Ø 1/2"

DIMENSIONS	ECO 11 F	ECO 14 F	ECO 17 F
<b>A mm</b>	295	335	375
<b>E mm</b>	210	250	290

## STARTING FUMES ACCESSORIES

DESCRIPTION	CODE
 air/fumes splitter pipe kit 80/80 mm	010031X0
 flanged coupling for vertical coaxial pipe Ø 100/60 mm	010006X0
 full air suction fumes extraction coaxial kit Ø 60/100 mm, horizontal (L = 1000 mm)	010012X0

DESCRIPTION	CODE
 Coaxial pipe Ø 60/100 mm with end and gasket, and inner part made of aluminium; outer part made of plastic Length L = 1000 mm	1KWMA56A
 Male/female coaxial extension Ø 60/100 mm complete with gaskets, aluminium internal, plastic external Length L = 1000 mm	1KWMA56U
 Coaxial curve 90°, Ø 60/100 mm, complete with gaskets Package 1 piece	1KWMA81W
 electric resistance kit for auxiliary antifreeze down to -15°C	013009X0